

Area of application: Indoor rooms with "normal" humidity

Important: Leave at least 60 cm distance between LoRa and mobile radio antenna

QUICK GUIDE

LoRa Indoor Gateway

1. LoRa antenna

Screw the white, cylindrical LoRa antenna to the "LoRa" contact on the rear panel

Note: If two white antennas are included, the second one must be omitted

2. Mobilfunk-antenna

Screw black mobile phone antenna to "4G" contact

3. Power supply unit

Connect USB cable and power supply unit. Connect the free USB-C plug to the gateway

4. Power supply

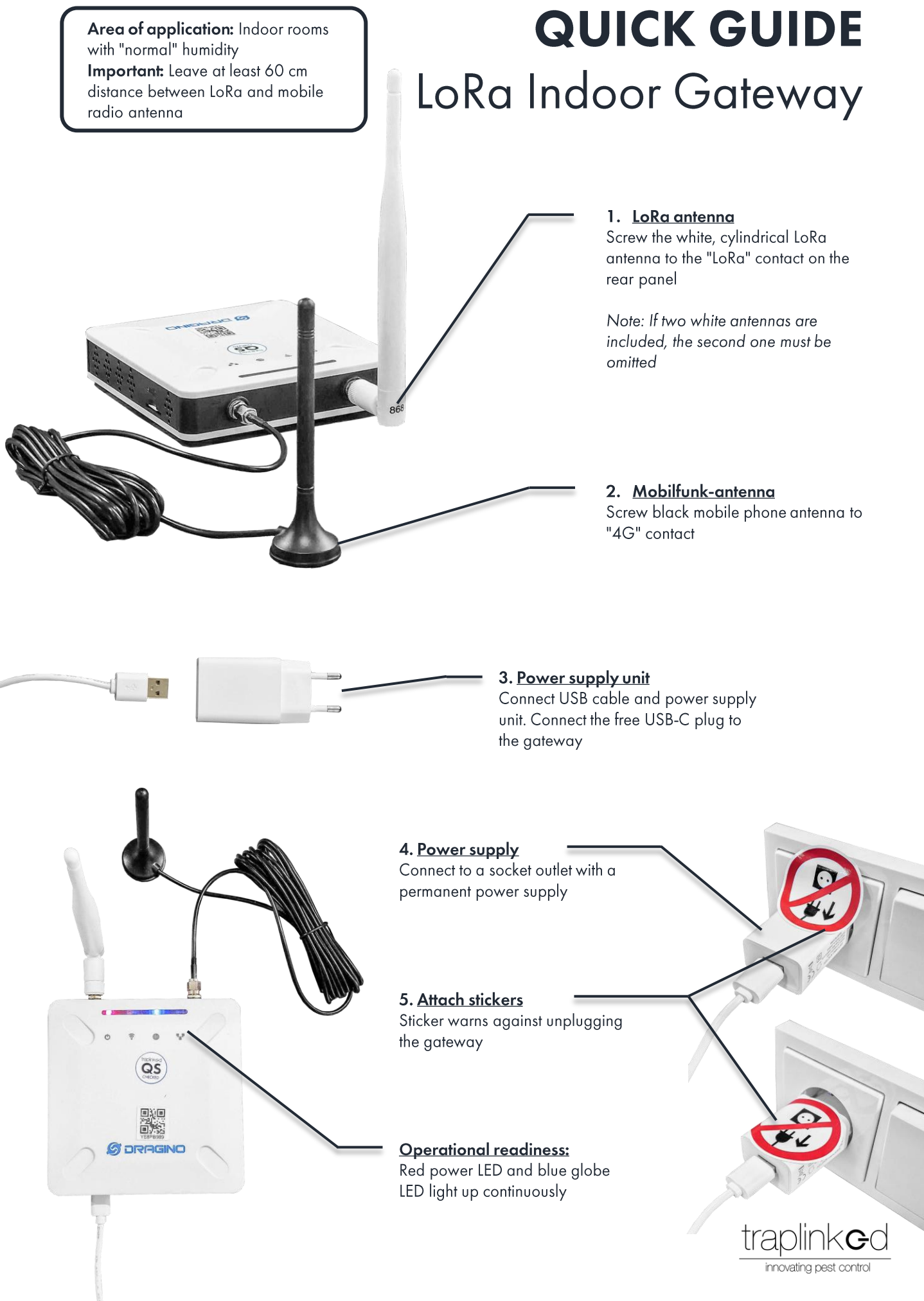
Connect to a socket outlet with a permanent power supply

5. Attach stickers

Sticker warns against unplugging the gateway

Operational readiness:

Red power LED and blue globe LED light up continuously



GATEWAY POSITIONING

1. **High**

The aim is to install as high as possible and to have few obstacles between the trap and the router. If necessary, have the customer set up a permanent power socket in an ideal location.

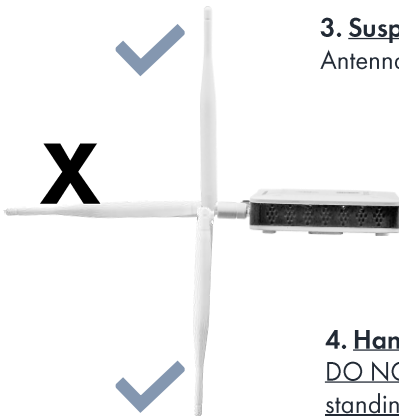


Gateway



2. **Central**

Set up as centrally as possible in the object. If the highest point is not in the middle of the object, prioritize height.

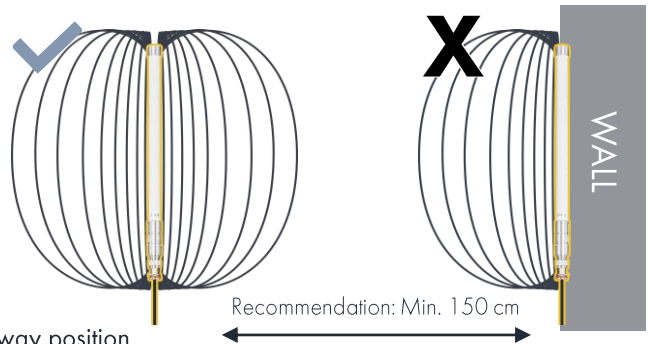


3. **Suspend the LoRa antenna vertically**

Antenna (indoor & outdoor gateway) may also point downwards.

4. **Hanging the LoRa antenna free-standing**

DO NOT lean against a wall. The LoRa antenna must always be mounted free-standing.



5. **Mobile phone reception**

Mobile phone reception must be available at the gateway position.

6. **Power supply**

The socket outlet at the installation site must be permanently supplied with power. If necessary, have a cable laid for this purpose.

More information & instructions:
traplinked.com/manual



Technical help & support:
traplinked.com/support



+49 911 477 567 65
support@traplinked.com

Area of application: Outdoor areas (e.g. on the roof), damp indoor areas
Important: Leave at least 60 cm distance between LoRa and mobile radio antenna

QUICK GUIDE

LoRa Outdoor Gateway

1. Open the lid

Attention: cover is wired

2. Plug in the

power supply unit

3. Connect LoRa

antenna & cable

4. Connecting the antenna

cable to the gateway

5. Close the lid

Break out the perforations provided for cable entry from the cover

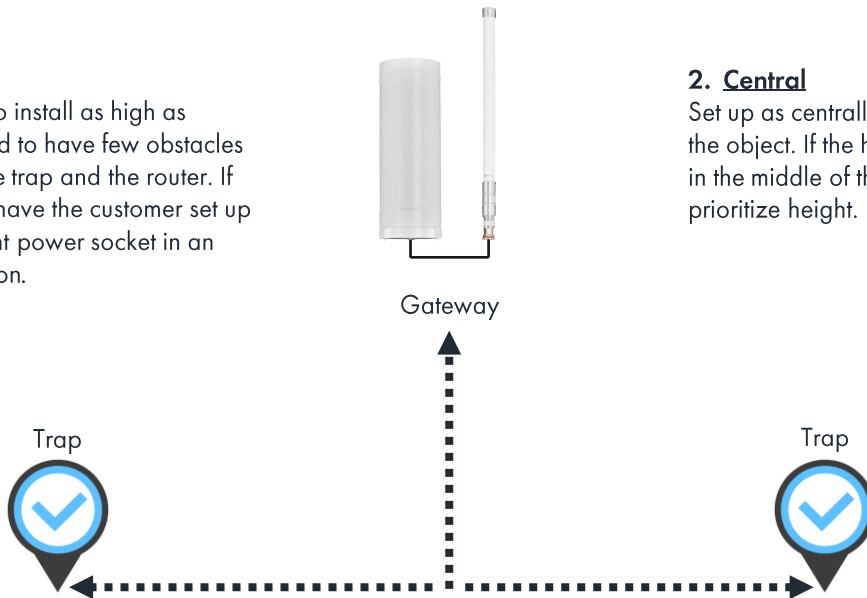
6. Connect with power

Operational readiness:
LED in the gateway cover lights up green continuously

GATEWAY POSITIONING

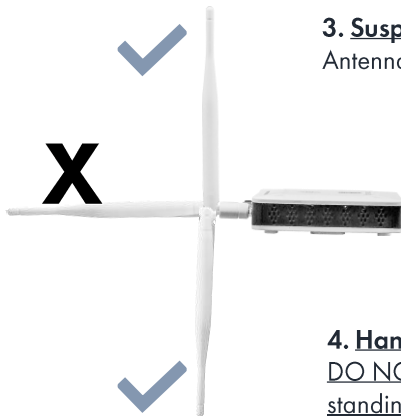
1. **High**

The aim is to install as high as possible and to have few obstacles between the trap and the router. If necessary, have the customer set up a permanent power socket in an ideal location.



2. **Central**

Set up as centrally as possible in the object. If the highest point is not in the middle of the object, prioritize height.

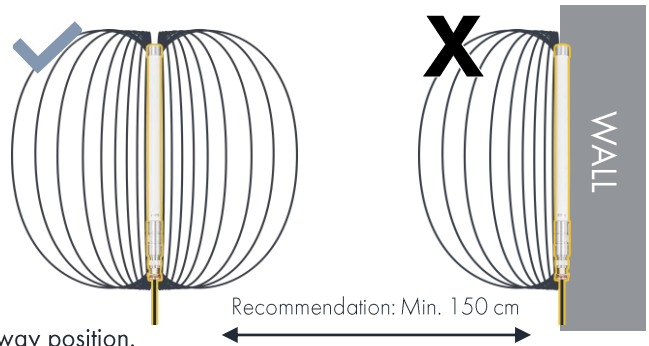


3. **Suspend the LoRa antenna vertically**

Antenna (indoor & outdoor gateway) may also point downwards.

4. **Hanging the LoRa antenna free-standing**

DO NOT lean against a wall. The LoRa antenna must always be mounted free-standing.



5. **Mobile phone reception**

Mobile phone reception must be available at the gateway position.

6. **Power supply**

The socket outlet at the installation site must be permanently supplied with power. If necessary, have a cable laid for this purpose.

More information & instructions:
traplinked.com/manual



Technical help & support:
traplinked.com/support



+49 911 477 567 65
support@traplinked.com