

TOM Nightvision

MANUAL

Quick Guide contents

1. Starting TOM
2. FAQ
3. Installation Details
4. Attachments

BEFORE STARTING TOM:

Please make sure that WiFi Data are set up correctly and that there needs to be an existing WiFi network you can use.

SUPPORT:

support@traplinked.com

+49 911 477 567 65

HINT

Please scan the QR code for the complete TOM manual

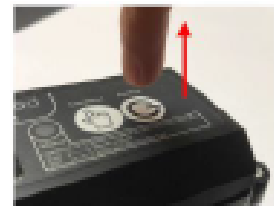
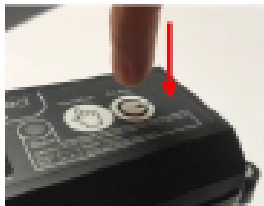


1. Starting TOM

▲ WARNING

Make sure that your router is properly set-up and online successfully before turning on your TOM device.

Press and hold the „An/Aus“ button for ~3 seconds, lift your finger when the LED starts blinking white



Your TOM device now connects to the WiFi network. If connected successfully, it will take and send a first image. If the status LED is blinking green, the device completed the sending successfully

The device may blink in magenta before blinking green – which means that it successfully found the WiFi network and is in the process of sending



Sending...



Sent! ✓

▲ WARNING

If your TOM device is blinking red or in a disco fashion (changing colors), please go to page 15 (FAQ).

HINT

Directly after being started, TOM checks if the connection is stable enough on the long term – a process taking about 20 minutes.

The device will take and send an image every 2 minutes – and therefore also blink green every two minutes. Don't let it irritate you – You can proceed in the meantime!
Blinking green = All good 😊

2. FAQ

What do I do if my TOM device blinks in a disco fashion (changing between Red, Blue, Green)



This means that TOM could not find the WiFi network.

1. Make sure that the router is close to the device.
2. Make sure that the router LEDs are shining constant as shown on page 8.
3. Turn the device off: Press and hold the „An/Aus“ button for ~5 seconds, when the LED is shining white, lift your finger.
4. Turn the device on again: Press and hold the „An/Aus“ button for ~3 seconds, lift your finger when the LED starts blinking white.

What do I do if my TOM device shows the status **Unstable connection** ?

This can only happen in the first 20 minutes after turning on your TOM device. If the status does not change to „Online“ after those 20 minutes, please restart the device: Press and hold the „An/Aus“ button for ~3 seconds, lift your finger when the LED starts blinking white.

What do I do if my TOM device shows the status **Down** ?

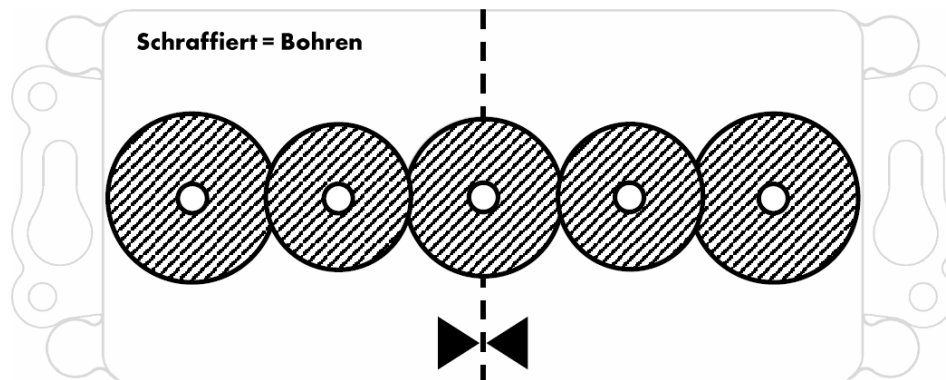
This means that this TOM device was not able to reach the server anymore. The reason could be bad connection. Or maybe somebody unplugged the router on site? So or so, you need to restart the device: Press and hold the „An/Aus“ button for ~3 seconds, lift your finger when the LED starts blinking white.

How do I turn off TOM?

Press for about 4 seconds the „An/Aus“ button and wait, until the the light gets **white**. Before the light gets white, it gets green. Still press the button, as long as the light is green.

3. Installation Details

TOM should always be placed on a mount or on especially prepared tunnel/boxes, which can be bought at traplinked. In case you want to use trap's traplinked is not offering you can use the following drilling template:



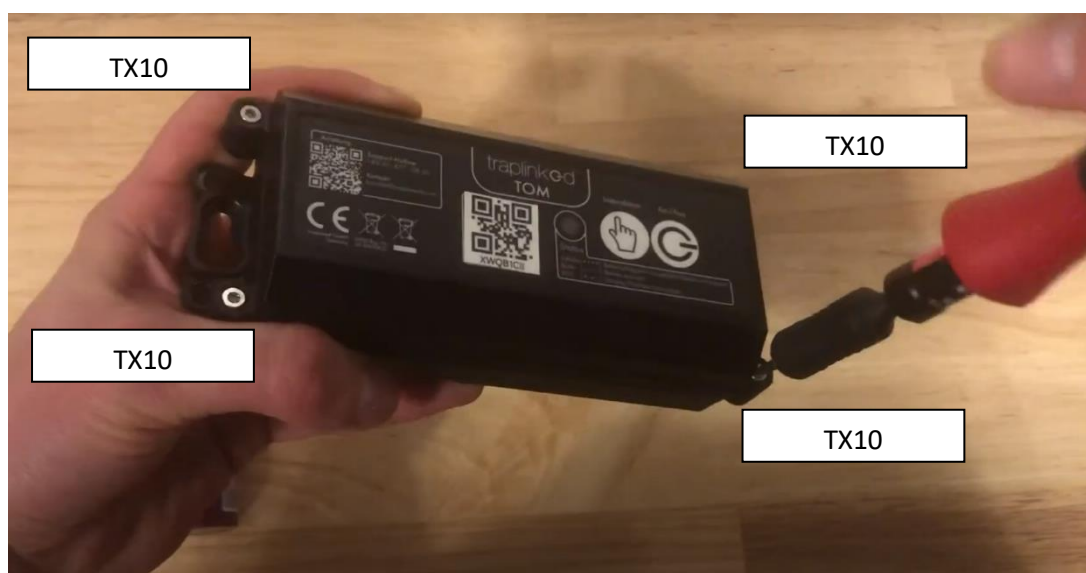
The hatched area is to be drilled.

How do I place and change the batteries?

Only batteries approved by traplinekd may be inserted in TOM systems. You will find a data sheet in the appendix. Currently, only the battery to be purchased from traplinked has been approved.

The batteries are changed as follows. You can find the instruction also on our YouTube channel, follow the link <https://www.youtube.com/watch?v=3-pOQOnhOhk> (starting at minute 1:49).

1. Switch off the TOM system as described in the manual.
2. Loosen the 4x torx (TX10) screws:



3. Remove the batteries by pulling the tab:



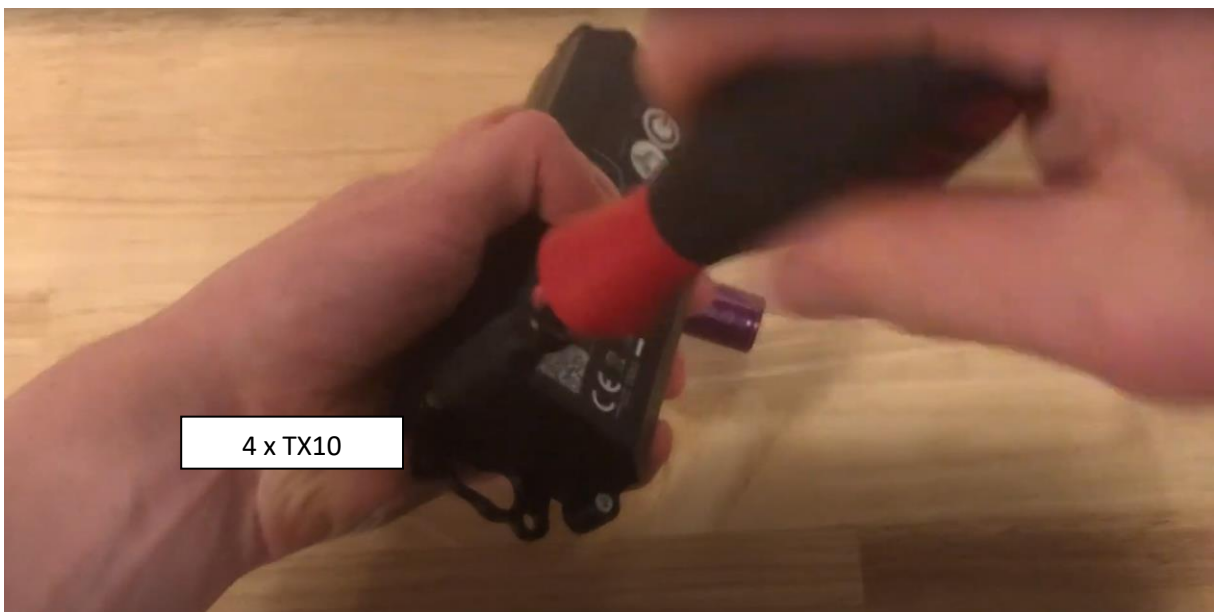
4. Insert the batteries, paying attention to the correct insertion direction. Before insertion of any batteries make sure there is no visible damage on the batteries.



5. Place the „+“ of the battery to the „+“ of TOM and the „-“ of the battery to „-“ of TOM:



6. Finally tighten the 4 torx screws again, the system is ready for use again.

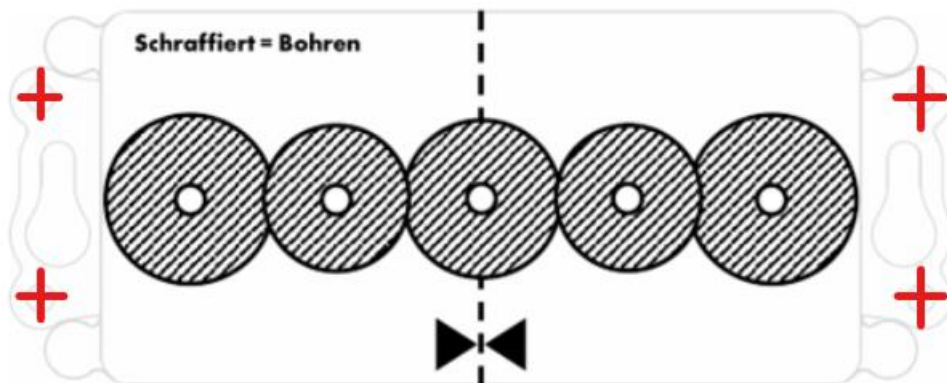


ATTACHMENT

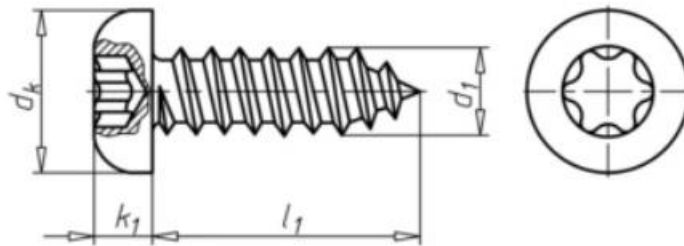
Installation details

For boxes with a flat top, TOM can be mounted with 4 screws.

For each of the 4 screws a hole must be drilled with a 2.5 mm drill bit at the red crosses.



1. Screw specification:



2. Nominal diameter (d_1)	3,5 mm
3. Length (l_1)	6,5 mm
4. Head diameter (d_k)	7 mm
5. Head height (k_1)	2,6 mm
6. Material	stainless steel A2
7. Surface	Bright
8. RoHS compliant	Yes
9. Shape	C
10. Internal drive	TX15
11. ISO	14585
12. Head shape	Flat head
13. Thread type	Sheet metal screw thread
14. Thread design	Solid thread
15. Tip shape	C
16. Declaration of performance (EU-BauPVO)	No
17. Standards	ISO 14585

Battery details


UN38.3 测试概要

UN38.3 Test Summary

按照《试验和标准手册》第 38.3 小节对锂电池或锂电池组进行试验的情况概要

Lithium cell or battery test summary in accordance with sub-section 38.3 of Manual of Tests and Criteria

Product Name 产品名称	Li-ion Cell 锂离子电芯	Sample Model 样品型号	21700
Basic parameter 基本参数	3.7V, 4800mAh	Product Type 产品类型	Lithium ion Cell 锂离子电芯
Rated Energy 额定能量	17.76Wh	Lithium Content 锂含量	--
Sample Mass 样品重量	69.3g	Sample Physical description 样品物理形态	Gray, Cylindrical, Solid 灰色, 圆柱形, 固体
Client 委托方	Dongguan Yilink Electronic Technology Co., Ltd. 东莞壹凌电子科技有限公司		
Client Address 委托方地址	6/F, Building D, Huazhaoxin Industrial Park, A88 Shibei Road, Tangli Village, Fenggang Town, Dongguan City China. 东莞市凤岗镇塘沥村石碑路 A88 号华兆鑫工业园 D 栋六楼		
Manufacturer 制造商	Dongguan Yilink Electronic Technology Co., Ltd. 东莞壹凌电子科技有限公司		
Manufacturer Address 制造商地址	6/F, Building D, Huazhaoxin Industrial Park, A88 Shibei Road, Tangli Village, Fenggang Town, Dongguan City China. 东莞市凤岗镇塘沥村石碑路 A88 号华兆鑫工业园 D 栋六楼		
Factory 工厂	Dongguan Yilink Electronic Technology Co., Ltd. 东莞壹凌电子科技有限公司		
Factory Address 工厂地址	6/F, Building D, Huazhaoxin Industrial Park, A88 Shibei Road, Tangli Village, Fenggang Town, Dongguan City China. 东莞市凤岗镇塘沥村石碑路 A88 号华兆鑫工业园 D 栋六楼		
Manufacturer's contact information 制造商联系信息	Phone number 电话号码	+86-18770768449	
	Email address 电子邮箱地址	Shi.pengfei@yilink.net	
	Website 网址	www.yilinkgb.com	

UN38.3 Test Report No. UN38.3 测试报告编号	NCT22008489XB1-1	Test Date 测试时间	2022.02.25-2022.03.09
Test No. 测试编号	Test item 测试项目	Conclusion 结论	
T1	Altitude simulation 高度模拟	Pass 合格	
T2	Thermal test 温度试验	Pass 合格	
T3	Vibration 振动	Pass 合格	
T4	Shock 冲击	Pass 合格	
T5	External short circuit 外部短路	Pass 合格	
T6	Impact/Crush 撞击/挤压	Pass 合格	
T7	Overcharge 过度充电	Not Applicable 不适用	
T8	Forced discharge 强制放电	Pass 合格	
Test Reference 测试依据	UNITED NATIONS "Manual of Tests and Criteria" (ST/SG/AC.10/11/Rev.7 Section 38.3) 联合国《试验和标准手册》第七修订版第 38.3 节。		
Assembled Battery Description 集成电池组说明	Not applicable for 38.3.3(f), 38.3.3(g). 不适用 38.3.3(f), 38.3.3(g)测试要求。		
Test Laboratory 测试实验室	Shenzhen NCT Testing Technology Co., Ltd. 深圳诺测检测技术有限公司		
Test Lab's Address 测试实验室地址	2A, 2/F., Building C and 1/F., Building B, Mianshang Younger Pioneer Park, Hangcheng Road, Gushu, Xixiang Street, Bao'an District, Shenzhen, Guangdong, China 广东省深圳市宝安区西乡街道固戍航城大道绵商青年创业园 B 栋第 1 层、C 栋 2 层 2A		
Test Lab's Phone 测试实验室电话	+86-755-27790922		
Test Lab's Email 测试实验室邮箱	sales@nct-testing.com		
Test Lab's Website 测试实验室网址	http://www.ncttesting.com		
Tested by 主检人	<i>Dylan Zhu</i> Dylan Zhu	Test Engineer 测试工程师	 <p>Shenzhen NCT Testing Technology Co., Ltd. 深圳诺测检测技术有限公司 Date of Issue 签发日期 2022.03.09</p>
Inspected by 审核人	<i>Hely Wang</i> Hely Wang	Technical Manager 技术经理	
Approved by 批准人	<i>Boris Lin</i> Boris Lin	Technical Director 技术总监	

1.2M 跌落测试报告

1.2M Drop Test Report

Client 委托方	Dongguan Yilink Electronic Technology Co., Ltd. 东莞壹凌电子科技有限公司
Add. of Client 委托方地址	6/F, Building D, Huazhaoxin Industrial Park, A88 Shibe Road, Tangli Village, Fenggang Town, Dongguan City China. 东莞市凤岗镇塘沥村石碑路 A88 号华兆鑫工业园 D 栋六楼
Samples Description 样品名称	Li-ion Cell 锂离子电芯
Model/Type 型号规格	21700
Testing Laboratory 测试机构	Shenzhen NCT Testing Technology Co., Ltd. 深圳诺测检测技术有限公司 2A, 2/F., Building C and 1/F., Building B, Mianshang Younger Pioneer Park, Hangcheng Road, Gushu, Xixiang Street, Bao'an District, Shenzhen, Guangdong, China 广东省深圳市宝安区西乡街道固戍航城大道绵商青年创业园 B 栋第 1 层、C 栋 2 层 2A
Report No. 报告编号	NCT22008489XB1-2
Issued Date 发行日期	2022.03.09
Test Conclusion 测试结论: Shown in the Conclusion of test report. 见检测报告结论页。	

Tested by 主检人:

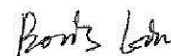


Dylan Zhu

Inspected by 审核人:



Hely Wang

Boris Lin

Date of Issue 签发日期: 2022.03.09

I、SAMPLE DESCRIPTION 样品描述

Product Name 产品名称	Li-ion Cell 锂离子电芯	Sample Model 样品型号	21700		
Manufacturer 制造商	Dongguan Yilink Electronic Technology Co., Ltd. 东莞壹凌电子科技有限公司				
Address 地址	6/F, Building D, Huazhaoxin Industrial Park, A88 Shibe Road, Tangli Village, Fenggang Town, Dongguan City China. 东莞市凤岗镇塘沥村石碑路 A88 号华兆鑫工业园 D 栋六楼				
Trade Mark 商标	---	Cell Shape 电芯形状	Cylindrical 圆柱形	Packaging dimensions 包装尺寸 (L×W×T)	(340×300×130)mm
Nominal Voltage 标称电压	3.7V	Rated Capacity 额定容量	4800mAh 17.76Wh	Battery Number 电池数量	100/PCS
Gross weight per package 每包装件毛重	8.0kg		Net weight of batteries per package 每包装件电池的净重	6.93kg/packing	
Receiving Date 接收日期	2022.03.09		Completing Date 完成日期	2022.03.09	

II、STANDARD 标准

21 Revised Edition of the 《Recommendations on the Transport of Dangerous Goods, Model Regulations》(ST/SG/AC.10/1/Rev.21).

《关于危险货物运输的建议书 规章范本》第 21 版。

III、TEST ITEM 测试项目

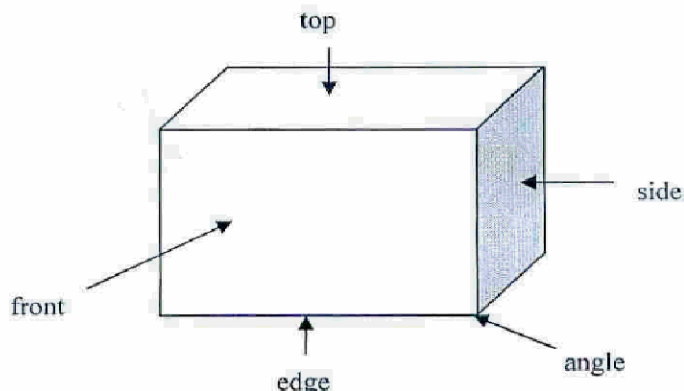
- 1). Drop test 跌落测试
- 2). Packing weight test 包装重量测试

IV、TEST METHOD 测试方法

The package of batteries is dropped from 1.2m, 5times per package. The test floor is concrete floor, each package is capable of withstanding a 1.2 meter drop test in any orientation without damage to cell or batteries contained therein. Without shifting of the contents so as to allow battery to battery (or cell to cell) contact and without release of contents.

电池包装件(或含有电池的包装件)从 1.2 米高度进行跌落,每个包装件 5 次.测试底板为混凝土

底板,每一个包装件应能承受在任一方位的 1.2 米跌落测试,并且没有电芯或电池损坏.没有位移导致电池或电芯相互接触,并没有内部物品从箱体漏出。



V、TEST RESULT 测试结果

1) Drop test 跌落测试

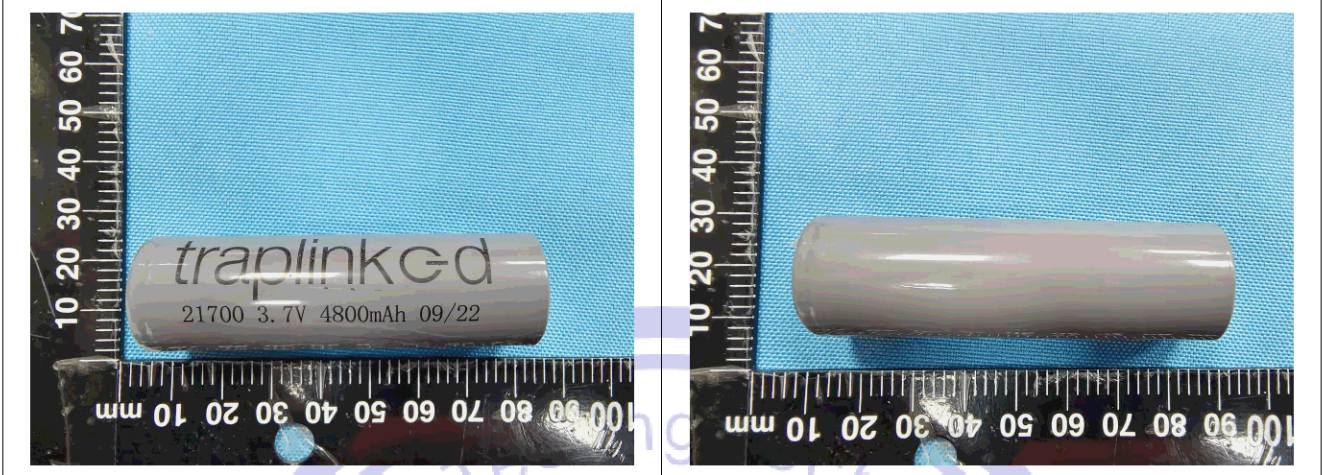
Drop position 跌落位置	Test status 测试情况	Conclusion 结论
Front 前面	Without damage packaging 包装没有损坏	Pass 合格
Edge 边缘	Without damage packaging 包装没有损坏	Pass 合格
Angle 角	Without damage packaging 包装没有损坏	Pass 合格
Side 侧面	Without damage packaging 包装没有损坏	Pass 合格
Top 顶部	Without damage packaging 包装没有损坏	Pass 合格

2) Packing weight test 包装重量测试

No. 编号	Test item 测试项目	Weight 重量 (kg)	Remark 备注
1	Packing weight test 包装重量测试	8.0	---

Photos 照片

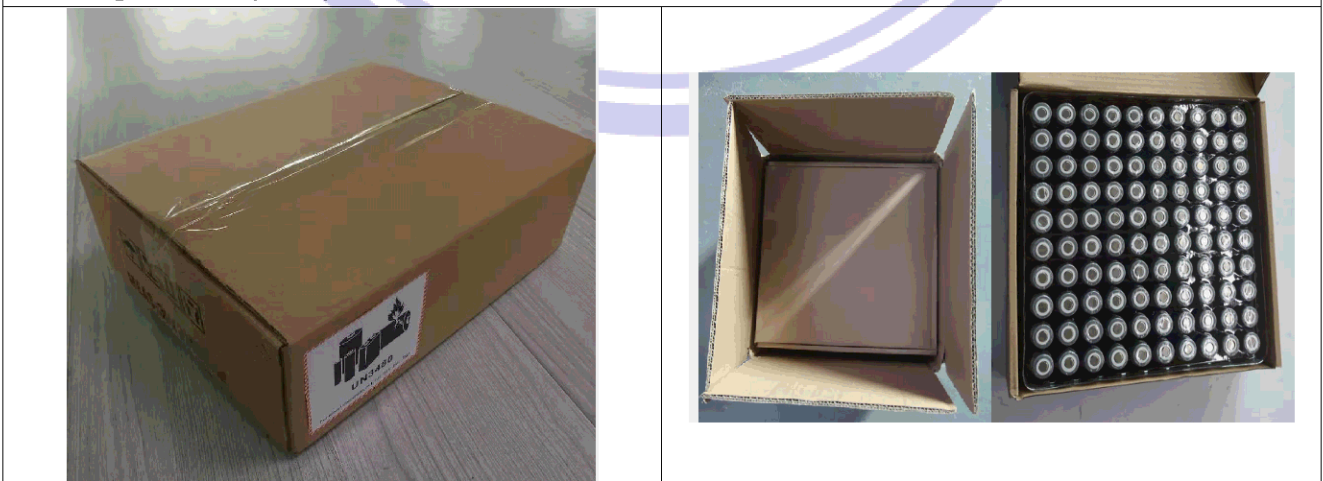
Samples 样品:



Package 包装: (空运)



Package 包装: (海运)



注意事项**Important Notice**

1. The test report is invalid without the official stamp of NCT.
本报告书无 NCT 盖章无效。
2. Nobody is allowed to photocopy or partly photocopy this test report without written permission of NCT.
未经 NCT 书面同意，不得部分地复制本报告书。
3. The test report is invalid without the signatures of Ratifier, Reviewer and Testing engineer.
本报告书无批准人、审核人、及主检人签名无效。
4. The report is invalid when anything of following happens – illegal transfer, reproduce, embezzlement, imposture, modification or tampering in any media form.
私自转让、复制、盗用、冒用、涂改、或以任何媒体形式篡改的报告书无效。
5. Objections to the test report must be submitted to NCT within 15 days.
对报告书若有异议，应于收到报告之日起 15 天内向本公司提出。
6. The test report is valid for the tested samples only.
本报告仅对测试样品有效。
7. The Chinese contents in this report are only for reference.
本报告中的中文内容仅供参考。

*****End of Report 报告结束*****