

Area of application: Indoor rooms with "normal" humidity

Important: Leave at least 60 cm distance between LoRa and mobile radio antenna

QUICK GUIDE

RAK LoRa Indoor Gateway



1. LoRa antenna

Screw the white, cylindrical LoRa antenna to the "LoRa" contact on the rear panel

Note: If two white antennas are included, the second one must be omitted

2. Power supply unit

Connect the power supply unit to the gateway



3. Power supply

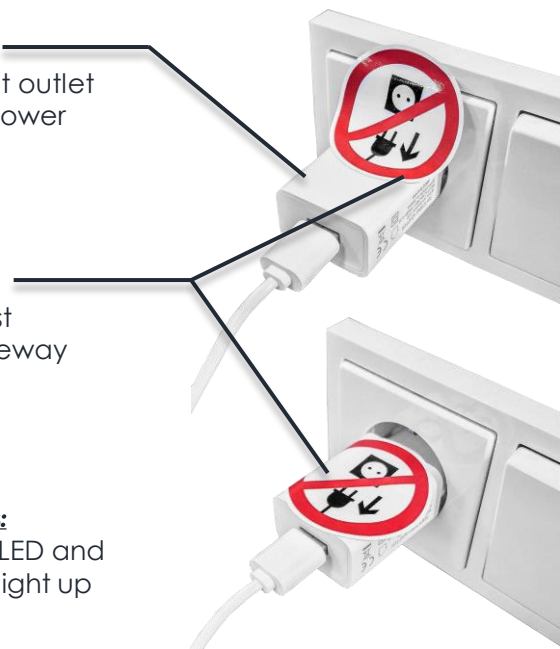
Connect to a socket outlet with a permanent power supply

4. Place sticker

Sticker warns against unplugging the gateway

Operational readiness:

Green PWR & LoRa LED and blue breathing LED light up continuously



Möglichkeit der Fernwartung:

Beim vorliegenden RAK-Gateway besteht die Möglichkeit über den traplinked-Support Fernwartungsaktivitäten durchzuführen. So kann unser Support beispielsweise aus der Ferne das Gateway neu starten, updaten und weitere Hilfestellung leisten. Die Kontaktmöglichkeiten zu unserem Support finden Sie auf der nächsten Seite.

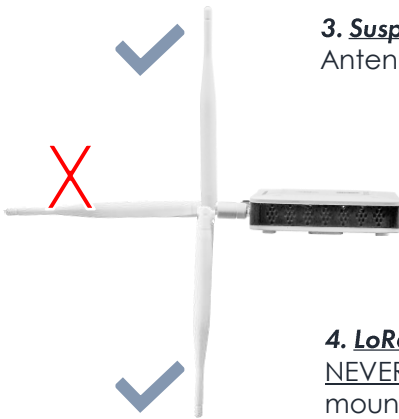
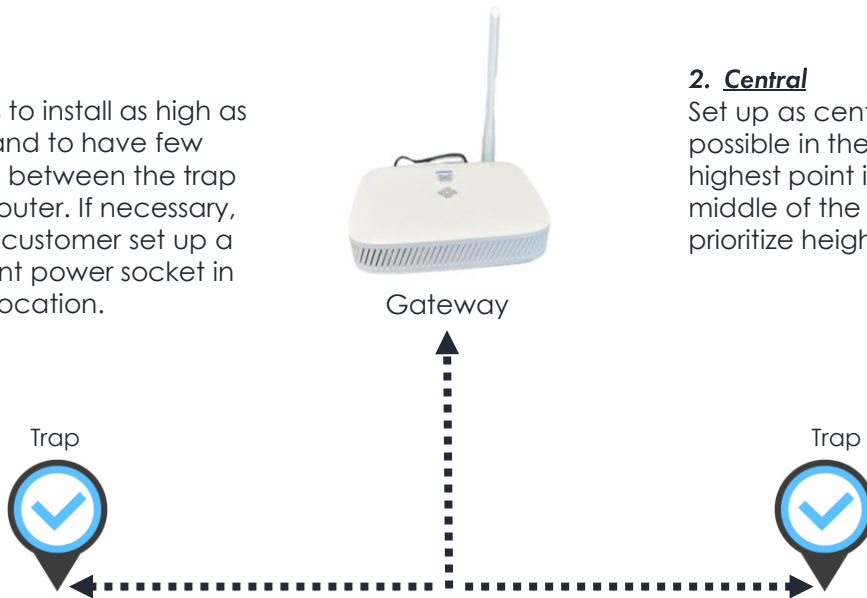
GATEWAY POSITION

1. High

The aim is to install as high as possible and to have few obstacles between the trap and the router. If necessary, have the customer set up a permanent power socket in an ideal location.

2. Central

Set up as centrally as possible in the object. If the highest point is not in the middle of the object, prioritize height.

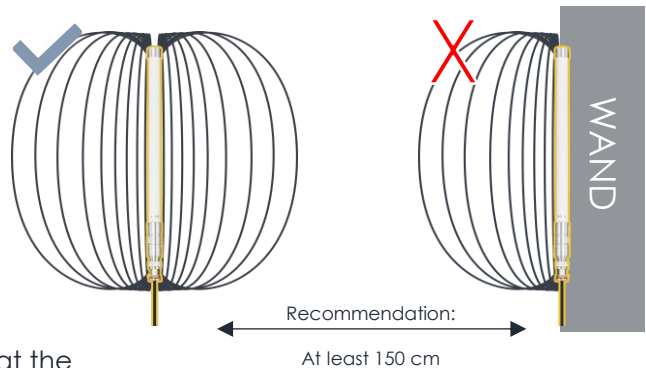


3. Suspend the LoRa antenna vertically

Antenna (indoor & outdoor gateway) may also point downwards.

4. LoRa antenna hang free-standing

NEVER lean against a wall. The LoRa antenna must always be mounted free-standing.



5. Mobile phone reception

Mobile phone reception must be available at the gateway installation site.

6. Power supply

The socket at the installation site must be permanently supplied with power. If necessary, have a cable laid for this purpose.

More information & instructions:
traplinked.com/anleitung



Technical help & support:
traplinked.com/support



+49 911 477 567 65
support@traplinked.com